



SCAN ME

Flex: Manual with Crank - 4" ANSI 150/ DN100 PN16

Flex is a fixed master stream monitor available in three flow options: up to 1250 GPM (4750 LPM), 1500 GPM (5700 LPM), or 2000 GPM (7600 LPM). It features a patented articulating waterway with low friction loss, compact size, and customizable features, making it versatile for various firefighting needs. Flex is available in manual, remote control (RC), and tiller handle models to suit different operational preferences.

What problems does Flex solve?

- **Limited Space on Apparatus:** Flex is designed with a compact size, fitting easily in dunnage areas, on aerial ladders or platforms, or on the back of the apparatus. Its 40.64 cm stow height and 15.24 cm swing radius allow it to fit where competitive models can't.
- **Excessive Friction Loss:** The patented articulating waterway of Flex reduces excessive curves and bends, resulting in minimal friction loss - only 3 PSI (0.21 bar) at 1250 GPM (4750 LPM), 4 PSI (0.28 bar) at 1500 GPM (5700 LPM), and 8 PSI (0.55 bar) at 2000 GPM (7600 LPM). This ensures maximum flow rate and distance at any given pump pressure.

Weight	18.05kg
Oscillation	No
Remote Control	No



- **Lack of Configurability:** Flex is highly configurable to meet specific needs. Choose from manual, tiller handle, or remote-control versions, and customize features such as crank placement, flow rating, and controller options.
- **Service and Maintenance:** Flex is easy to operate, program, and service with a free app that simplifies programming, diagnostics, troubleshooting, and updates. It includes CAN-bus J1939 protocol, making installation and integration with your apparatus straightforward.

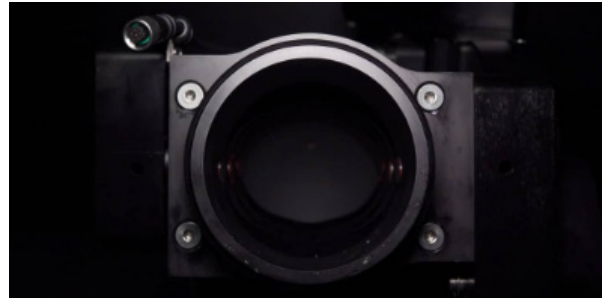
Key Features

Flow Rate



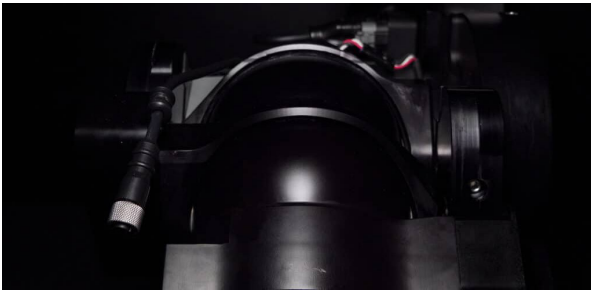
Flex delivers powerful water flow with three flow options: 1250 GPM (4750 LPM), 1500 GPM (5700 LPM), or 2000 GPM (7600 LPM). This flexibility ensures that firefighters can select the appropriate level of water delivery for different fireground situations, from high blow blitz attack to sustained firefighting operations.

Configurable Outlet Options



Flex offers configurable outlet options, allowing users to choose between 63.5 mm or 88.9 mm outlets. This flexibility enables fire departments to tailor the outlet size to their specific apparatus and operational requirements, ensuring the right flow rate and performance for different firefighting needs.

Articulating Waterway



Flex provides an extensive range of motion, with 165 degrees of vertical travel (120 degrees above horizontal and 45 degrees below horizontal) and 225 degrees of horizontal travel to the left and right, totaling 450 degrees.

This wide range allows firefighters to cover broad areas with precise control, ensuring optimal water placement for various firefighting scenarios, whether reaching high elevation fires or targeting low-angle areas.

Stream Range



Flex provides an extensive range of motion, with 165 degrees of vertical travel (120 degrees above horizontal and 45 degrees below horizontal) and 225 degrees of horizontal travel to the left and right, totaling 450 degrees. This wide range allows firefighters to cover broad areas with precise control, ensuring optimal water placement for various firefighting scenarios, whether reaching high elevation fires or targeting low-angle areas.

www.pslfireandsafety.co.nz

+64 9 818 8048
sales@pslfireandsafety.co.nz



Quality Management System Certification
ISO 9001:2015



Environmental Management System Certification
ISO 14001:2015



Occupational Health and Safety Management System Certification
ISO 45001:2018

Field Adjustable Vertical and Horizontal Hard Stops



Flex is equipped with field-adjustable vertical and horizontal hard stops, allowing firefighters to precisely limit the monitor's travel range in both directions. This feature enhances control by enabling specific boundaries for movement, preventing over-rotation or unwanted positioning, which is especially beneficial in confined spaces or when operating near obstructions. The ability to quickly adjust these hard stops in the field provides added flexibility, ensuring safe and efficient operation across different firefighting environments.

Compact and Versatile



The compact size of Flex enables it to fit in tight spaces, including dunnage, aerial ladders, or platforms. With a stow height of only 40.64 cm and a 5.24 cm swing radius, Flex can be easily positioned where other monitors might not fit. Its compatibility with 76.2 mm and 101.6 mm waterways, as well as Extend-A-Gun extendable waterways, makes it highly adaptable to a wide range of firefighting scenarios, ensuring operational efficiency even in confined spaces.

Available Nozzle Pairings



Flex is compatible with a range of master stream nozzles, including smooth bore nozzles and the Vortex®, providing enhanced versatility. This compatibility allows the monitor to be adapted to various operational requirements, ensuring optimal performance across a wide array of firefighting scenarios.

Upgradability

Flex is designed with future upgrades in mind, allowing for quick and simple modifications to alter flow ratings or reprogram hard stops and positioning through the app. Controller buttons can be reprogrammed at any time via the SmartPlex app, ensuring equipment remains up-to-date with evolving operational needs.

www.pslfireandsafety.co.nz

+64 9 818 8048
sales@pslfireandsafety.co.nz



Quality Management System Certification
ISO 9001:2015



Environmental Management System Certification
ISO 14001:2015



Occupational Health and Safety Management System Certification
ISO 45001:2018